

3-Stage Whole House Water Purification System (3/4" Port)

Pre-Installation Guidelines for the 3-Stage Whole House Water Filtration System:

Water Purification System (WPS) Connection: Connect the Water Purification System (WPS) directly to the cold water supply pipe. Ensure a secure and proper connection to maintain the system's functionality.

Sunlight Exposure: Avoid placing the Water Purification System (WPS) under direct sunlight. Choose an installation area that provides shade or protection from direct sunlight to prevent potential damage.

Avoid Damage-Prone Areas: It is crucial to install the Whole House Filter in locations where potential leaks could cause damage. Select an installation area away from sensitive items, electrical components, or areas susceptible to water damage.

Protection from Freezing Temperatures: Avoid installing the system in areas where temperatures can drop below freezing. Freezing temperatures can lead to water expansion, may cause cracks or leaks. Select a location that remains protected from extreme cold.

Water Temperature and Flow Rate: Ensure that the water temperature ranges from a minimum of 41°F to a maximum of 100°F.

The flow rate for the system is between 3 and 8 gallons per minute (GPM), with a working pressure of 20-80 psi. Install a water hammer arrester if necessary to address any sudden spikes in water pressure.

Prepare for Installation: Create a list of all plumbing fittings and tools needed to complete the installation. Consider acquiring screws or bolts to mount the WPS on the wall, as they are not included in the package. Note that screws/bolts and pipe unions are not provided with the system.

Water Shut-Off: Turn off the water supply while installing the Water Purification System (WPS). This ensures a safe and controlled installation process.

Electricity to Water Heater: Turn off the electricity to the water heater during the installation. Once the WPS is installed and pressurized, turn on a few hot and cold faucets to allow any trapped air in the pipes to escape. Afterward, turn the electricity back on for the water heater.

Proper Application of Teflon Tape: Use Teflon tape on threaded fittings to ensure a tight seal. Avoid using excessive layers of tape.

Inlet and Outlet Markings: Take note of the inlet and outlet markings on the system. Remember that the sediment filter (stage 1) is the first stage on the WPS, which is important for proper installation.

Other: This WPS is recommended for installation on the ground floor or in the basement. In areas where temperatures can fall below freezing, ensure the installation room stays above freezing. The filter can also be installed outdoors in locations where temperatures consistently remain above freezing. Use a water shut-off or leak alarm system for automatic water shut-off in sensitive areas or rooms where water damage could occur.

Compliance with Codes: Follow all local plumbing codes and building regulations to ensure a safe and compliant installation process. By following these pre-installation guidelines and adhering to local codes, you can ensure the successful and effective installation of the 3-Stage Whole House Water Filtration System.

WE RECOMMEND TO USE A LICENSED PLUMBER TO INSTALL THIS PRODUCT

Installation:

1. Mark the inlet and outlet sides of the Water Purification System (WPS).

If you prefer a wall-mounted installation and the water flow is in the opposite direction, do not flip the WPS over.

Instead, unscrew the metal bracket attached to the WPS, flip it, and reinstall.

2. Turn off the main line shut-off valve in the house.

3. Open a few faucets in the house to drain the lines.

4. Place the WPS on the main water supply line where it enters the house, after the main shut-off valve for the whole house but before the pipes branch off into multiple directions.

You may choose to locate the WPS after the branches to the inside and outside plumbing, depending on your preference for filtered water.

5. Measure, cut, and remove a section of the main incoming water line near the installation point of the WPS.

When determining the length of the pipe to cut, account for the filter width, shut-off valves, union fitting, and bypass valve.

Allow the line to drain thoroughly. Smooth the newly cut ends to avoid jagged points or edges.

The WPS should be located in a dry, level area and protected from freezing.

6. Install shut-off valves on both sides of the WPS for future easy servicing.

We recommend using Blue Monster Thread Sealant for extra protection against leaks during installation.

7. Securely mount the WPS using the mounting bracket and bolts (or heavy-duty screws). Ensure the WPS is level.

If you choose not to use a wall-mounted installation, provide extra support for the pipes where the WPS is installed.

8. Fit together the pipe union and shut-off valve, using a small amount of plumbing tape on the threads or omitting it altogether.

Excessive use of plumbing tape can cause cracks on the housing cap or valves.

We recommend using Blue Monster Thread Sealant for extra protection against leaks during installation.

9. Simultaneously fit together the shut-off valve and WPS (IN inside). Fit the pipe union to the shut-off valve on the OUT side.

10. Join the pipe union and pipe. Tighten all connections of the installed WPS.

Turning Water Back On:

Slowly turn the water back on. In a few minutes, the sound of water entering the WPS will stop. After the WPS is installed, it is necessary to thoroughly flush the system. To do this, open the nearest COLD water faucet (do not use a hot water faucet) and let the water run for a while. The water may initially appear discolored, which is normal due to carbon dust.

The discoloration should dissipate within 5-10 minutes, although a small amount of residual dust may remain in the water for few days. It is not uncommon for the water.



Leakage at red button (for model with Pressure Release red button)

In case of a small leak at the red button area, use a screwdriver to tighten the screw that holds the red button. Turn the screw 360 degrees clockwise. Repeat if necessary. The adjustment screw is located inside the cap.

To access this area, shut off the water supply using the valves, remove the housing part, and adjust the pressure release screw. If the screw is overtightened, the red button (pressure release) will not work.

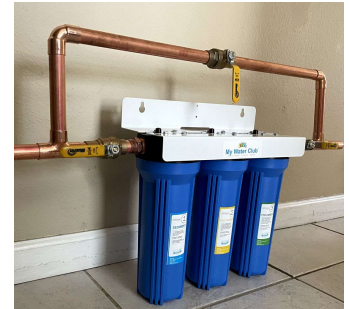
If needed, slightly release or turn the screw counterclockwise to make the button work.
Tip: You can leave only one button working to release pressure.



Parts required (not included):

- hex nipples or pipe nipples
- pipe union
- pipe hangers (if WPS installed without using wall mounted bracket)
- pressure gauge

This is an example of one variant of installation for the MyWaterClub Whole House 3-Stage Water Filtration System. It includes shut-off valves on both the input and output sides for easy maintenance and water control. The setup also demonstrates parallel piping, which allows for more flexibility during installation, ensuring the system can be serviced or bypassed as needed without disrupting water flow.



Filter Change Instruction

We recommend to change filters every 3-6 months.

1. Turn off the water supply to the WPS from the inside. Open a nearby faucet to lower the water pressure (wait for a couple of minutes).
 2. Press the Red Button (Pressure Release Button).
 3. Unscrew the housing from the cap using a filter wrench.
 4. Remove and discard the old filter cartridges.
 5. Scrub the housing and cap with warm water using a sponge. Rinse all parts thoroughly with water.
 6. Inspect both the inside and outside of the housing for any signs of damage. If needed, lubricate the O-ring with clean silicone grease. Avoid using petroleum jelly. Ensure that the O-ring is properly seated inside the housing.
 7. Remove the filter packaging and insert the new filter cartridges into the housing in the specified order as written on the filter housing.
 8. Fit the bottom of the housing into the cap and hand tighten it. Then, use the filter wrench to securely tighten it.
 9. Close any open faucets and slowly turn on the water supply.
 10. Open the valves on the inside and outside. Carefully inspect for any leaks. If you find a leak, you will need to shut off the water again, remove the housing, and check if the O-ring is seated properly.
 11. Flush the WPS by running a few cold water faucets for a couple of minutes. The new cartridges may contain some carbon dust and air bubbles, which will dissipate in a few days. We recommend checking the WPS for any signs of leaks within the next 12 hours.
- Tip: If you encounter difficulty unscrewing the housing, use an extension (like a pipe) to gain more leverage on the wrench. Be careful not to apply excessive force, as it may cause the housing to crack.

Parts & Replacement Filter Sets

You can purchase replacement filter set on Amazon.com or MyWaterClub website. Simply enter the ASIN number or perform a simple search on Amazon to find them.

| | Amazon ASIN # | MyWaterClub.com |
|---|---------------|-----------------|
| 3 or 4 Year Replacement Filters Set with Premium Coconut Carbon Block | B07H2VNG85 | 3UF24COCONUT |
| Housing (replace every 3-4 years) | B07JYPRQX6 | HOUSING34B |
| Gasket | B01MG88IZG | GASKET34 |

ONE YEAR LIMITED WARRANTY

What your warranty covers:

Our water purification systems are warranted to the original owner to be free of defects in material and workmanship from the date of manufacture for one year as follows:

- Manufacturer will, within one year of purchase, replace the defected parts (excluding filters) at no charge.
- The replaceable filters are not warranted since the service life of replaceable filter varies with local water conditions and thus not warranted.

Conditions of Warranty:

- System must be maintained and serviced with the manufacturer original replacement parts and filters. The performance of your drinking water system is directly related to the conditions of the water been treated and the particular application in which it is used. Therefore, manufacturer's liability is limited to the cost of repair of the WPS.
- The manufacturer is not liable for incidental or consequential damages of any kind. Systems must be installed and operated in accordance with manufacture's recommended procedures and guidelines.

Questions: sales@mywaterclub.com